

**QUALITY.**  
an old habit we renew  
**EVERYDAY.**

**B R engineering works Pvt. Ltd.**

Since 1984

Industries Superlative Screws & Barrel for Plastic Processing

*Imagination } Innovation } Inspiration*

# DISCOVER NEWER POSSIBILITIES OF HIGHER QUALITY:

B.R. Engineering Works Pvt. Ltd. is one of India's largest manufacturer of high quality Screws & Barrels today, and a change initiator, market mover & shaker, and technology leader.

Beginning its inspiring industrial saga in 1984 with a single conventional Lathe Machine worth 100 US\$ as its capital equipment, the company today operates a manufacturing facility sprawling across 50,000 sq ft, equipped with best-in-class technologies and processes, and an expert team of 50-plus professionals. Its current Installed Capacity is 4,000 Screws & Barrels per annum, which is slated to be augmented to 15,000 Screws & Barrels per annum by 2025.

Behind this gratifying growth is a simple industrial mantra – RESPECT the customer – deliver optimal quality product within the assured minimum delivery periods. An axiom propagated by the company's visionary founder Mr. S.H. Patel, and followed by every member of the BR corporate family.

The B.R. Engineering Works Pvt. Ltd. plant features a comprehensive array of equipment, facilities (including CNC) and inspection devices. Here, every aspect of advanced technology is translated into a customer / user benefit.

The plant maintains a large inventory of pre-conditioned, ready-for-machining raw materials at all times, which cuts down on material sourcing time and enables it to ensure short delivery periods. What is more, the plant operates all 24 hours of the day in full-fledged rotation shifts, making possible the shortest delivery times in the industry. That too, without any compromises in quality at any stage is assured through stringent checks and balances – in fact, inspection rejections at the BR plant are practically nil.

As we said, it is advantage emptor all the way.

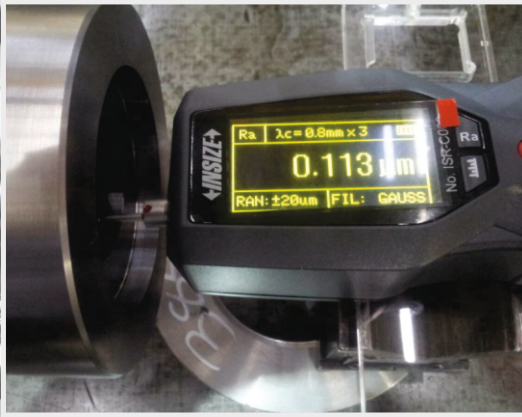
BR Engineering also translates its wealth of expertise into expert counsel, and is today acknowledged as the industry's most thorough and dependable processing stopover consultants. Apart from drawing on decades of frontline experience, this is achieved by a simple shift in POV – BR's techno-consultants step into the customer's shoes, views the process challenge from there, and voi la – solutions that satisfy the customer present themselves.

To sum up, BR believes that every quality-conscious company should join hands with it. That is the confidence a company gains when its core corporate value is customer satisfaction through superior quality.

Time to make that call, perhaps.

**ENGINEERED FOR EXCELLENCE**

**surface finish measurement**



**High precision honed Barrel**



**High precision polished Screw**

**Vickers finish measurement**



**High performance automatic precision measurement control with touch screen**

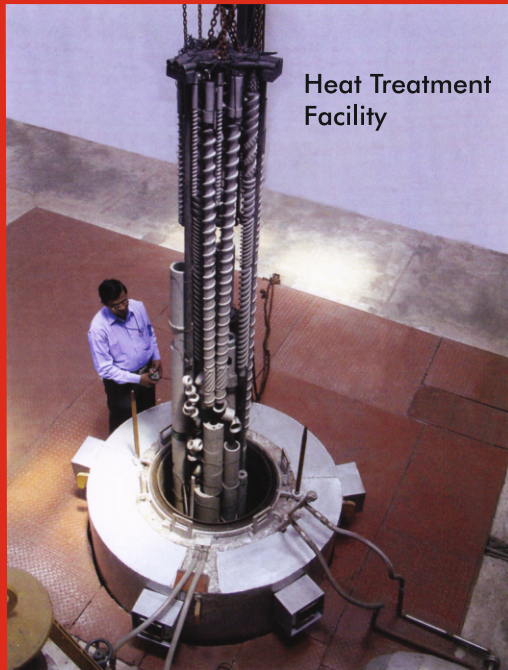
# ENGINEERED FOR EXCELLENCE



**CNC Thread Milling Machine**  
Ø14 to Ø250 mm up to 5000 mm Length



**CNC Deep Hole Boring Machine**  
Ø18 to Ø150 mm up to 4500 mm Length



### Design & Development:

Our Design Division is equipped with the latest IT infrastructure (computer systems and software, etc), and our expert team of Design Engineers have the skillsets to prepare complete designs as per client requirements, with only a few basic dimension specifications provided from the client's end.

So if you don't have the exact Screw or Barrel drawings, don't worry – BR's design team will do it for you. Even if you need some design modifications or later-stage improvements, they have the expertise to meet those needs, backed by a corporate culture of innovating on one's feet.

### Manufacturing Facilities:

The BR Engineering plant features best-in-class manufacturing machinery, with CNC systems of small to big capacities. Machining, grinding and polishing operations are conducted under one roof, obviating the need for subcontracting. The plant adheres to niche tool-room culture, ensuring that at every manufacturing point, the parts are handled optimally.

Whether ordering fresh, or as replacement, BR's Screws and Barrels meet superior quality norms without fail, offering you consistent peace of mind.

### Vendor Park:

We developed in-house vendor park to mention secrecy and quality.

At the BR plant is an in-house Vertical Gas Nitriding Furnace, enabling it to accept jobs up to 650 mm diameter and 4900 mm length. This furnace is equipped with a fully automatic microprocessor-based control system with PID Precision, ensuring uniform hardening and surface treatment, which in turn renders your replacement items highly durable.

### Quality Control & Raw Material Standardization:

Quality control at BR plant is done with Nitride Alloy Steel of MUSCO, verified with a test certificate that provides correct metallurgical configurations. This is the trusted process which certifies the quality of raw material – at the first order, or for replacement items. This process ensures that you can carry your processing consistently, and almost effortlessly.

Special care is taken of stocks of other specialized alloys (for specific applications such as the latest bi-metallic blanks).



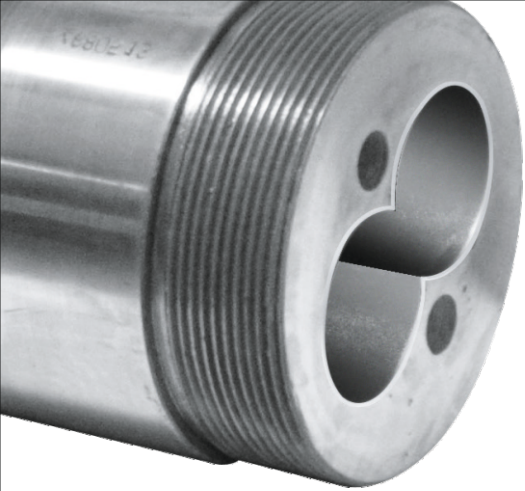
The BR plant maintains an average Raw Material Stock of 50 metric tonnes of 20 to 350 mm diameter width available at all times.





## Product Array:

- Twin Parallel Screw
- Barrier Screw
- Single Screw
- Single Barrel
- Twin Hole Barrel Rear Barrel
- Twin Barrels (Sleeve Fitted, Parallel)
- Grooved Feed Bush
- Associated Plastic Machinery Parts
- Bimetallic Screw & Barrel
- Rubber Extrusion Screw Barrel
- Food Extrusion Screw Barrel
- Segmented Twin Screw & Barrel

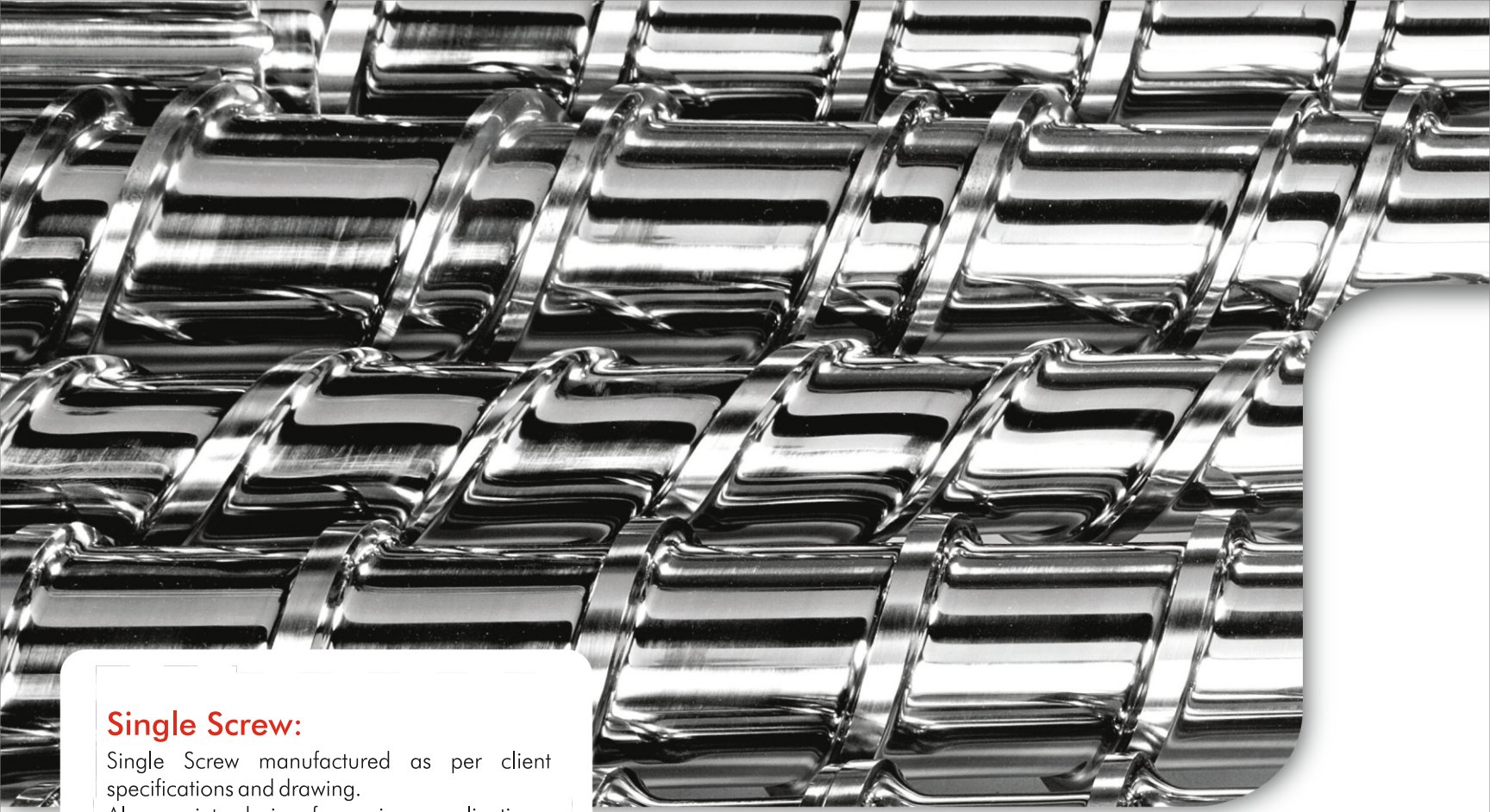


### **Twin Parallel Screw:**

Twin Parallel Screws with varied profiles for counter-rotating and co-rotating. Also, Extruders ranging from 30 to 150 mm diameters.



**ENGINEERED FOR EXCELLENCE**



### **Single Screw:**

Single Screw manufactured as per client specifications and drawing. Also, variety design for various applications, ranging from 14 to 250 mm diameter and lengths up to 5000 mm.





### **Barrier Screw:**

BR Engineering manufactures Barrier Screws for a variety of materials and applications. Barrier Screws enable proper mixing and higher productivity, among its many advantages. They also exclude undesired degradation of products.



## Injection Moulding Screw Barrel

Deep hole-drilling / boring machines to manufacture Barrels up to 300 mm in diameter and 5000 mm in length. Honing facilities for honing operations from 14 to 300 mm diameter and up to 5000 mm in length.



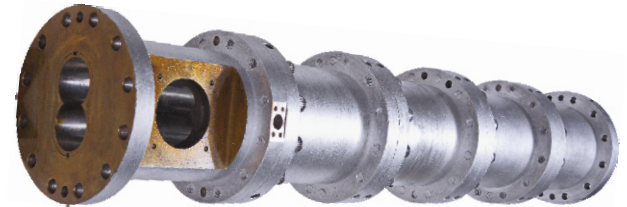
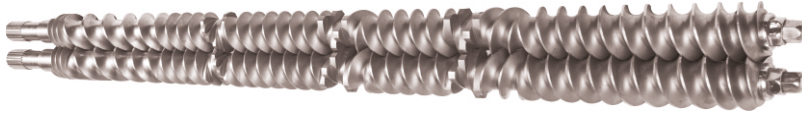
## Twin Screw & Barrel

Twin Barrels ranging from 30 to 150 mm in diameter and lengths up to 3500 mm.



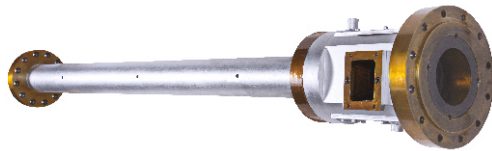
## Segmented Twin Screw & Barrel

from 30 to 150 mm diameter & maximum length of 3500 mm. for compounding and food Extrusion



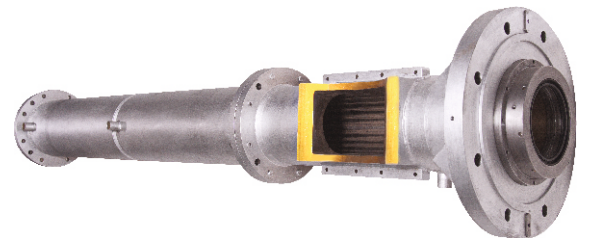
## Grooved Feed Extrusion Screw & Barrel

Increase the extruder output, save energy, highly homogeneous melting property

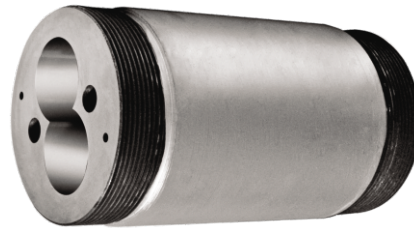


## Rubber Extrusion Screw & Barrel

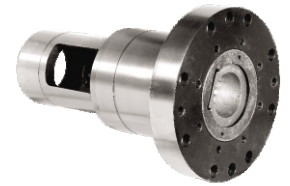
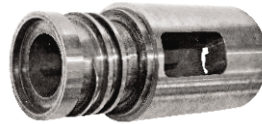
Making for cold feed & hot feed extrusion machine  
Dia. 30mm to 250 mm & Length upto 5000 mm



**Twin Barrels (Sleeve Fitted, Parallel) :** Parallel Twin Barrel sets are generally divided into two to ten pieces. BR Engineering manufactures them in 45 to 150 mm diameters, and lengths up to 600 mm.



**Grooved Feed Bush :** BR manufactures Grooved Feed Bush ranging from 40 to 150 mm in diameter, or as per client specifications and drawing.



## Associated Plastic Machinery Parts



Cylinder Heads / Nozzels



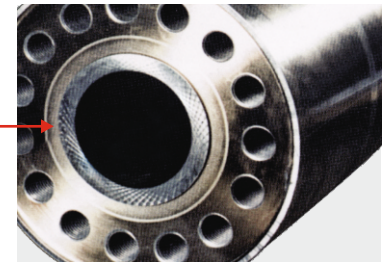
Ring Plunger set

## Bimetallic Screw & Barrel

Employing the latest bi-metallic cylinder technology in manufacture, these are made for specific applications that use abrasive and corrosive materials with plastics, and demand high wear-resistance under critical conditions. BR Engineering uses world class alloys tested and proven for tough operating conditions, for this purpose. The backing steels also meet high pressures and long-life requirements for long-term trouble-free operations. Bi-metallic Barrels offer more than five times the life-span of Nitrided Barrels.



Bimetallic Screw



Bimetallic Cylinder

## Our Global Footprints:



[www.brengineeringworks.com](http://www.brengineeringworks.com)



### **B R engineering works Pvt. Ltd.**

Plot No.4, CMC Compound, Opp. Jay Laxmi Estate, Anup Engg. Road, Odhav,  
Ahmedabad-382415. (Guj) INDIA. Ph.: +91-79-22975343 | 22874554 | 22972554

Mobile: +91 99244 00096, +91 99246 44651, +91 99244 00026

Email: [info@brengineering.in](mailto:info@brengineering.in), [sales@brengineering.in](mailto:sales@brengineering.in)

URL: [www.brengineering.in](http://www.brengineering.in), [www.brengineeringworks.com](http://www.brengineeringworks.com)